

# LP15 modular device accessory

## Instruction of use

# Table of contents

<b>Introduction   Safety information</b>	<b>3</b>
<b>Inteded use</b>	<b>4</b>
<b>Scope of delivery</b>	<b>5</b>
<b>Accessories</b>	<b>5</b>
<b>Technical data</b>	<b>8</b>
<b>Assembly</b>	<b>8</b>
<b>Installing the power supply</b>	<b>14</b>
<b>Operation</b>	<b>15</b>
<b>Warnings</b>	<b>16</b>
<b>Cleaning   Desinfection</b>	<b>17</b>
<b>Used symbols</b>	<b>17</b>
<b>Disposal</b>	<b>18</b>
<b>Service   manufacturer</b>	<b>19</b>

# Introduction | Safety information

## Introduction

Dear customer,

Many thanks for purchasing the LP15 modular device accessory for the Physio-Control LIFE-PAK® 15. These instructions provide technical information, use and assembly instructions.

## Safety information

- Please read the instructions for use thoroughly before operating the LP15 modular device accessory.
- Store these instructions carefully for reference purposes, and observe the safety information in particular.
- CRS medical shall not be liable for damage resulting from power packs or voltage supplies used for the Physio-Control LIFEPAK® 15, regardless of the configuration of the LP15 modular device accessory used.
- The manufacturer shall accept no liability for damage caused by improper operation, attachment, assembly or installation.
- Use the LP15 modular device accessory only in conjunction with the Physio-Control LIFEPAK® 15 with the associated original bag.
- Maintenance and repairs of the LP15 modular device accessory may be carried out only by authorized professional technicians. In case of a defect, please contact the customer service department of CRS medical GmbH directly. Any modification to the equipment or its accessories that is not performed by the manufacturer shall void any liability or guarantee obligations of CRS medical GmbH.
- Please inspect the LP15 modular device accessory after each use, and do not use it if:
  - there is any visible mechanical damage to any of the components
  - there is any visible mechanical/electrical damage to the power supply
  - the power connection is not completed automatically when closing the mount
  - the locking mechanism does not close securely
  - there are objects on the two magnetic couplers, such as metal chips
  - parts of the modular device accessory have come loose.
  - the LED on the power supply is flashing rapidly
  - the mains connection and charge control lights are both flashing rapidly

## Inteded use

The LP15 modular device accessory is an accessory for a medical device and consists of various components that are combined in different manners to ensure the protection and - depending on the variant selected – the power supply for a Physio-Control LIFEPAK® 15 de-fibrillator in EMS land vehicles.

The LP15 modular device accessory is designed for stationary use or for use in an ambulance. In an ambulance, the defibrillator used is securely mounted, allowing for the defibrillator to be used during deployment. The LP15 modular device accessory may only be used in protected areas. This includes inside the solid walls in the interior of buildings, and stable walls of EMS ground vehicles.

The individual components are described in more detail below:

The product provided in this accessory is an **LP15 Adaption w/o power**. This is installed on the bottom of the device, and is compatible with a range of fastening options within the vehicle. Safe operation of the brackets is only guaranteed if the original accessory "Standard carrying bag" P/N: 11577-000002 is used.

The **LP15 Wall Fastening** is designed in the respective LP configurations for mounting to a vertical wall; it must be ensured that the wall is fixed (not a door or similar). In the w power configuration, the device accessory has the additional option of a power supply for a defibrillator, using the original Physio-Control LIFEPAK® 15 power supply in the AC-DC or DC-DC versions.

The **LP15 Power Adapter** is installed on the back of the housing of the Physio-Control LIFEPAK® 15 and connected to the power supply outlet of the device. In combination with an **LP15 Wall Fastening** in the **w power** configuration, the device can be supplied automatically in the holder via the relevant original power supply.

The **LP15 Power Supply Fastening** is designed to securely hold the external AC power supply, P/N: 11140-000072 or external DC power supply, P/N 11140-000074 of the Physio-Control LIFEPAK® 15 in conjunction with the extension cable, P/N 11140-000080.

Please also observe the instructions for use for the Physio-Control LIFEPAK® 15.

These instructions for use are valid for the products listed under "Scope of delivery" and "Accessories" from a series or batch number starting with 11xxxxxx. For further information on the structure of the series or batch number, please see the "Symbols used" section.

## Scope of delivery

The scope of delivery may include multiple components and accessory parts of the modular device accessory. These instructions for use are valid for all components and accessory parts of the modular device accessory, and therefore only one copy is enclosed for each combination option in the orders. The instructions for use are also available online on our homepage, at [www.crs-medical.com](http://www.crs-medical.com)

The following is a list of the individual components and accessories:

### LP15 Adaption w/o power (P/N: 1042100041)

Consisting of:

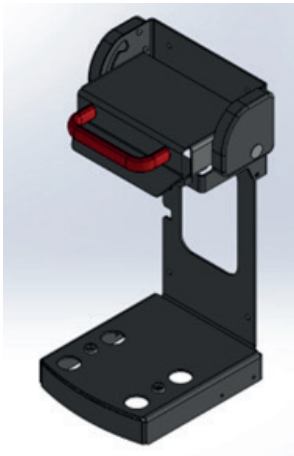
- 1 LP15 Fastening Plate (P/N: 1040100405)
- 4 buffers (P/N: 1040304007)
- 4 washers
- 4 screws for fastening the adaption to the defibrillator (P/N: 1010300590)



## Accessories

The LP15 Adaption w/o power can be operated with the following accessories. The securing mechanism functions independently of the selected configuration of the LP15 Wall Fasten-ings (w/o or w power).

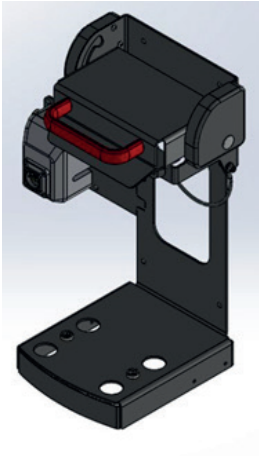
### LP15 Wall Fastening w/o power (P/N: 1042100040)



## LP15 Power Adapter (P/N: 1042100042)



## LP15 Wall Fastening w power (P/N: 1042100043)



## LP15 Power Supply Fastening (P/N: 1042100045)

Consisting of:

- 2 LP15 Support (power supply)(P/N: 1040100424)
- 4 screws for fastening the Support to the LP15 Wall Fastening
- 4 screws for fastening the power supply to the Support
- 12 washers
- 8 spring washers
- 8 cap nuts



A variety of protective bags are marketed for the Physio-Control LIFEPAK® 15. The above products can be used without restrictions with the following protective bags.

### **Standard carrying bag (P/N: 11577-000002, not available from CRS medical)**



### **Shoulder strap (P/N: 11577-000001, not available from CRS medical)**

### **Top-mounted bag (P/N: 11220-000028, not available from CRS medical)**

### **Backpack (P/N: 11260-000039, not available from CRS medical)**

# Technical data

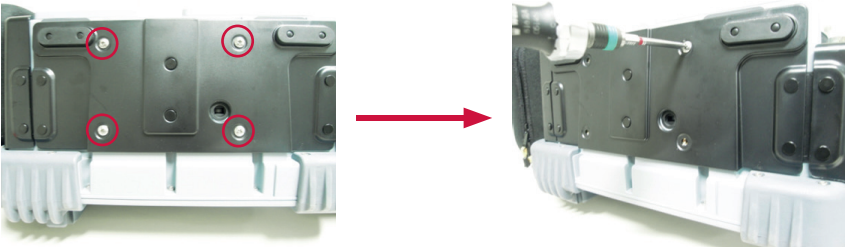
P/N	Description	Dimensions mm [WxHxD]	Weight [g]	electrical parameters	IP safety	Operating temperature	Storage temperature
1042100040	LP15 Wall Fastening w/o power	236 x 446,5 x 217	4600	N/A	N/A	0°C to +40°C, 5% to 95% hum., non condensing	-30°C to +70°C, 5% to 95% hum., non condensing
1042100041	LP15 Adaption w/o power	147 x 20 x 112	170	N/A	N/A		
1042100042	LP15 Power Adapter	60 x 260 x 48	1460	12,0VDC; 7,0A	IP00		
1042100043	LP15 Wall Fastening w power	363 x 446,5 x 217	5800	12,0VDC; 7,0A	IP00		
1042100045	LP15 Power Supply Fastening	295 x 20 x 72,5	100	N/A	N/A		

We reserve the right to modify the technical features and appearance of the item during product improvements.

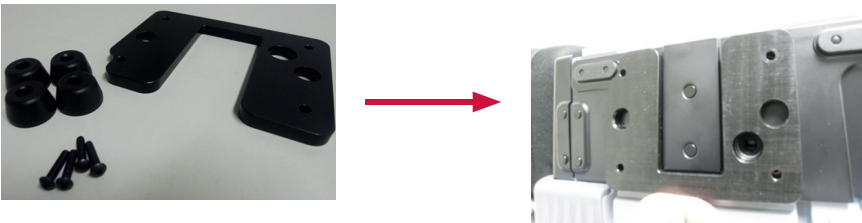
## Assembly

### 1. Installing the LP15 Adaption w/o power on the bottom of the device

Please observe the safety information and the products listed in the Accessories section.

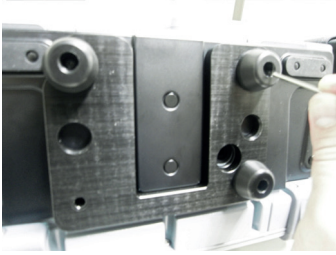


Remove the 4 screws attaching the bag to the bottom of the device.



Place the LP15 Adaption w/o power on the bottom, as shown in the image above.





Place one of the included washers into each of the provided plastic feet, then use the provided screws to screw the Adaptation w/o power onto the bottom of the device.

## 2. Assembly of the LP15 Power Adapter



Remove the cover over the USB port on the back of the device. Do not lose the screws, as they are needed in a later step. Please also store the cover carefully for later use.



Take the LP15 Power Adapter and place it on the USB port as shown in the image above. Ensure that the Adapter is sitting cleanly on the port, as it can easily become tilted in the bag.



Now, fasten the LP15 Power Adapter to the device. To do so, please use the screws that were used to fasten the cover over the USB port.

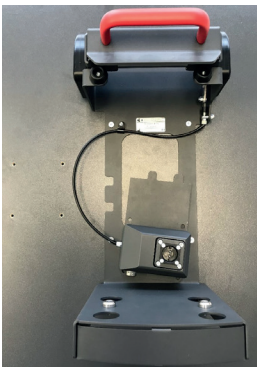


Now, connect the angled connector to the input socket on the device.

### 3. Assembly of the LP15 Wall Fastening w power

To use the bracket in a secure and ergonomic manner, we recommend attaching it at approx. 1m (based on the top of the base of the fastening) above the vehicle floor.

Ensure that you have enough space to move to insert and remove the defibrillator.



Fasten the wall bracket using 8 screws (M6) to a flat surface, using the drill hole pattern shown on page 12. Ensure that the area is large enough so that the LP15 E-Box can be in-stalled on the same surface.

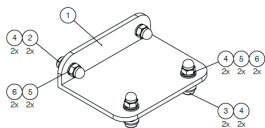


After you have fastened the bracket, please fasten the LP15 E-Box with another 4 screws (M6) as shown in the drill hole pattern on page 12. Then check to ensure the ends of the cable sheathing sit cleanly in the end sleeves of the bracket. These can slip out during transport or assembly.

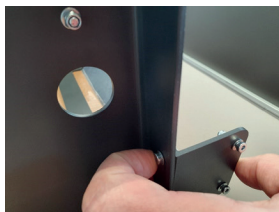
After installation, please insert the defibrillator with adapter mounted in accordance with steps 1 and 2, to ensure that all parts are correctly fastened. To do so, please connect the power supply to the bracket as described in the “Installation” section. If everything is positioned correctly, with the bracket connected and the device inserted, the power connection light will be illuminated continuously, and the charge control light on the device will flash in a regular pattern. In addition, the LED on the power supply should be illuminated green continuously. If this is not the case, adjust the LP15 E-Box once again, and repeat the test.

#### 4. Assembly of the LP15 Power Supply Fastening

For the LP15 Wall Fastening w power, it is possible to permanently mount the original power supply unit of the Physio-Control LIFEPAK® 15 underneath the wall fastening. To do this, remove the article 1042100045 from the packaging and fit the left and right sides of the bracket one after the other. Carefully detach positions 2 and 4 from positions 1, 5 and 6 in the following diagram.



Now place the bracket on the outside of the LP15 Wall Fastening w power and insert items 2 and 4 from the inside through the holes provided on the LP15 Wall Fastening w power and the bracket to be fastened (Item 1). Then insert positions 5 and 6 onto the screw from the outside and tighten firmly. Now repeat the process for the other side.

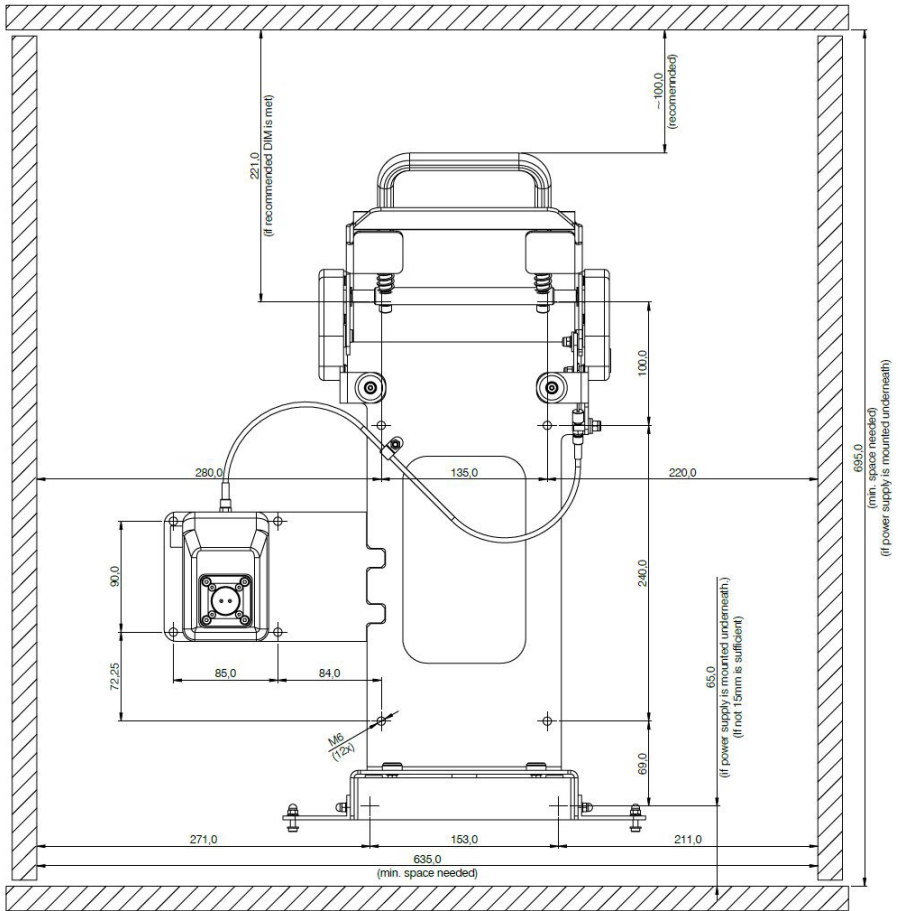


To attach the Physio-Control LIFEPAK<sup>®</sup> 15 power supply unit, now remove positions 3 - 6 on the horizontal part of the mounting bracket on both sides of the holder. Make sure to keep the order of the slices. Hold the power supply unit with the output side on the side of the E-box under the mounting brackets and insert a screw with washer (items 3 + 4) through the mounting holes of the power supply unit and the power supply unit holder and secure immediately with the upper washer and the cap nut (items 4 - 6). Repeat the process for the remaining 3 fixing holes and tighten the screws and nuts.



To connect the power supply unit to the bracket, please refer to the Installation section and the manufacturer's instructions for connecting to the mains.

# LP15 w power bracket drill hole pattern



(All measurements in mm)

# Installing the power supply

Only for LP15 Wall Fastening w power.



The power pack used to supply power or extension cable to the Physio-Control LIFEPAK® 15 must conform to the specifications of the defibrillator manufacturer (such as the Physio-Control DC Power Adapter 11140-000074 or the Physio-Control AC Power Adapter 11140-000072 or extension cable 11140-000080).

## 1. Completing the electrical connection

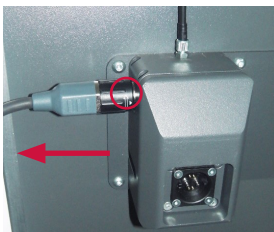
Connect the DC output of the power supply to the DC connection port on the side of the LP15 E-Box, as shown in the image.

To connect the power pack on the supply side, please observe the manufacturer's instructions.



## 2. Disconnecting the electrical connection

Turn the bayonet ring of the connection plug as shown on the label, then pull the plug out of the socket. Please also observe the information provided by the power supply manufacturer.



# Operation

## 1. Inserting the defibrillator

Insert the LIFEPAK® 15 defibrillator with appropriately installed LP15 Adaption w/o power on-to the base of the bracket. Ensure that the device is sitting cleanly on the centering pieces of the bracket. You can generally tell this by giving it a good tug.

If the device is sitting cleanly on the base, please close the cover on the bracket. The handle does not need to be pulled out to do so. Simply pushing down on the handle is sufficient. The cover will snap audibly into the end position.

For a LP15 Wall Fastening w power:

Ensure that the external power supply is detected by the defibrillator, by checking to ensure that the charging lights on the front of the device are illuminated.

## 2. Removing the defibrillator

Pull the red handle towards you, then swivel the cover of the bracket upwards. It will remain in the top end position in resting position.

Then, remove the defibrillator from the LP15 Wall Fastening at an angle to the front using the device handle.

# Warnings

The power pack used to supply power to the Physio-Control LIFEPAK® 15 must conform to the specifications of the defibrillator manufacturer (such as the Physio-Control DC Power Adapter 11140-000074 or the Physio-Control AC Power Adapter 11140-000072).

The defibrillator must always be inserted or removed using a straight, vertical motion. Avoid tipping the device to the side. Otherwise, the bracket may be damaged.

Ensure that all mechanical and electrical parts are free from damage and foreign objects. These can damage or block the bracket, for instance causing an electrical defect to the defibrillator, power supply or power pack of the LP15 modular device accessory.



The float-mounted magnetic coupler contains mechanical restrictions. If these are forcibly overridden, this will damage the magnetic coupling and make it unsuitable for further use.

Use the defibrillator power supply in accordance with the manufacturer's specifications.

The device manufacturer, Physio-Control, expressly recommends that the defibrillator always be operated with the battery inserted, even if an external power supply is connected.

Do not allow liquids or moisture to get into the electronic components. Also observe the manufacturer's operating and warning information and specifications for all devices used.



# Cleaning | Desinfection

Please remove the defibrillator and power pack from the bracket for cleaning, and disconnect all devices from their power supplies. The surfaces of the LP15 modular device accessory can be cleaned with a moist, lint-free cloth and commonly available mild cleaning agents. Before use, please ensure that the cleaning agent contains no solvents. Also use commonly available disinfecting agents for disinfection. Ensure that no liquids or moisture get into the electronic components.

## Used symbols



See the instructions for use / observe the safety information



CE mark according to the Medical Device Regulation 2017/745



Reference number



Serial number



Batch number



Manufacturer



The recommended temperature range for storage



The recommended relative humidity for storage

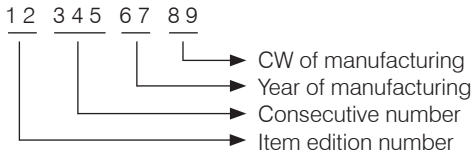


Handle the package carefully

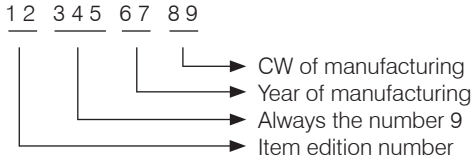


Observe the instructions for use

Structure of the serial number:



Aufbau der Chargennummer:



## Disposal

Packaging is considered a raw material, and is reusable. Properly sort and dispose of packaging to ensure environmental protection.



This product is subject to regulation 2012/19/EU, and must therefore be disposed of separately from general household waste. Once the device is no longer usable, please dispose of it properly at a collection point for electrical and electronic devices.

Further information on environmentally-friendly disposal is available from CRS medical.

## Service | manufacturer

Manufacturer:

CRS medical GmbH  
Loherstraße 6  
D - 35614 Asslar

T: +49 6441 38331-0  
F: +49 6441 38331-29  
info@crs-medical.com  
www.crs-medical.com



Loherstraße 6  
D-35614 Aßlar

T: +49 6441 38331-0  
F: +49 6441 38331-29

[info@crs-medical.com](mailto:info@crs-medical.com)  
[www.crs-medical.com](http://www.crs-medical.com)